

UNIQUE HOMES

RESIDENCES AT THE LIDDEL, LOCATED ON L.A.'S GOLDEN MILE, GO ON SALE EARLY 2017

**WITH AN INCREASED DEMAND FOR AMENITY-RICH, HIGH-END
RESIDENCES, L.A.'S THE LIDDEL MEETS THE MARKET SHIFT.**



Located on Wilshire Boulevard in Los Angeles, California, [The Liddel](#) offers a boutique collection of 56 residences that provide an unexpected blend of classic sophistication and a refined contemporary aesthetic. The refreshingly modern, shared amenity spaces are envisioned by world-renowned interior architect [Jamie Bush](#), whose signature style offers a warm, authentic living environment for a true casual, California lifestyle. The residences at The Liddel have been thoughtfully designed to provide a clean, open canvas that balances crisp, contemporary lines. Flexible floor plans within each residence features generous living space. Select

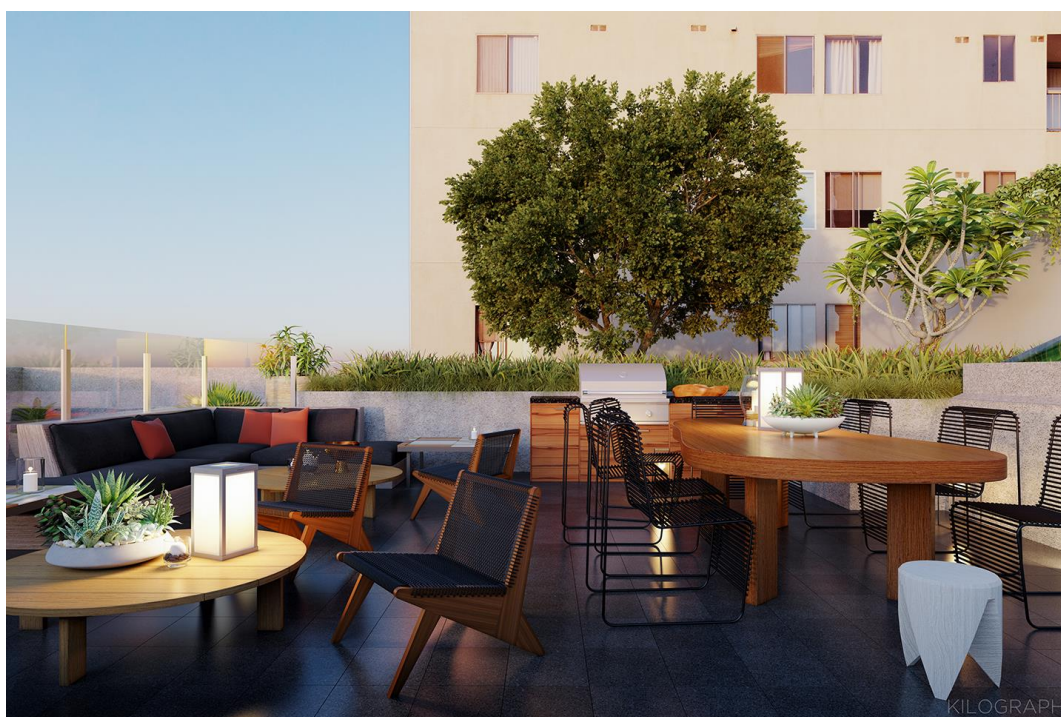
residences connect fluidly to private terraces and a variety of penthouses boast panoramic city views. With world-class amenities and one-of-a-kind communal spaces, including a magnificent rooftop with fireplace, lounge areas and BBQs, The Liddel offers an unrivaled lifestyle experience in one of Los Angeles's most sought-after neighborhoods.

The Wilshire Corridor, also known as The Golden Mile, is located in the heart of Westwood, bordered by Beverly Hills, Holmby Hills and Bel Air. From acclaimed dining and shopping to rich cultural and entertainment options, The Liddel puts the very best of L.A.'s Westside within close reach, from culinary favorites to sleek and stylish hotspots from the beaches of Santa Monica to the nearby, world-famous Rodeo Drive. Centrally located with fine dining, shopping and entertainment in close proximity, The Liddel makes for an effortless cosmopolitan lifestyle experience, whether setting out to work, health, play, dine or explore.

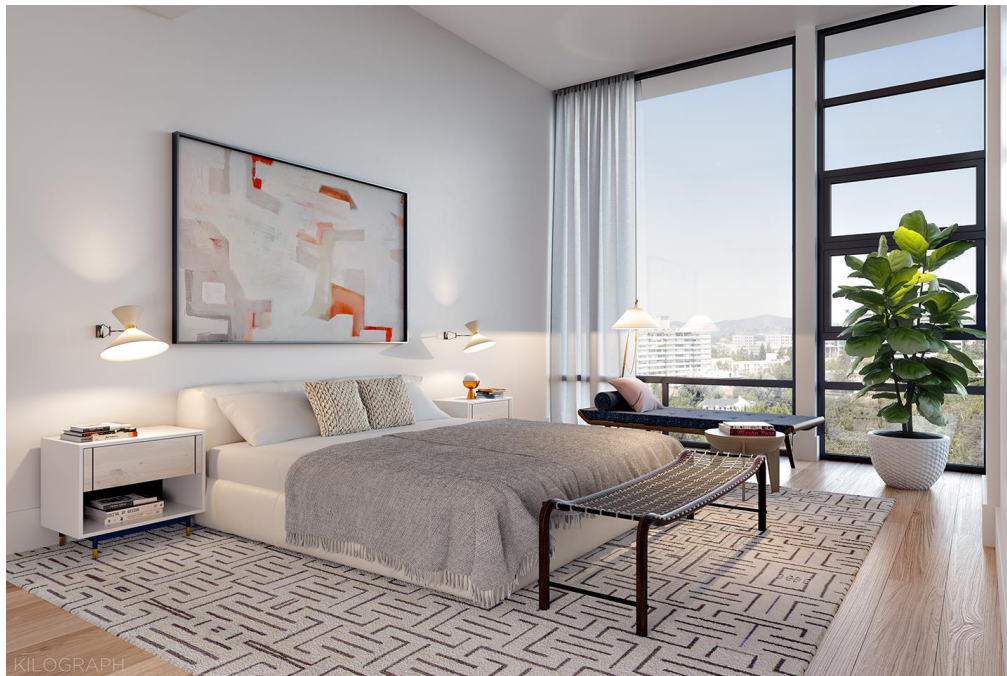
The Liddel offers a variety of unites, including one-bedroom and one-bedroom-with-den residences with up to 1,347 square feet and two-bedroom residences featuring approximately 1,520 square feet of living space. The sixth floor features eight unique residences known as The Terraces and one floor above, on level seven, eight Penthouse residences boast two-bedroom plus den and three-bedroom floor plans up to 2,700 square feet.

With sales to begin early 2017, pricing starts at \$900,000 and ranges up to \$4 million.

Residence features include open-concept living areas, wide-plank white oak floors, European-inspired kitchens with Miele appliances, wine storage and clean, minimalistic bathroom design with full tile walls. Building features include 24-hour valet service, an entry salon that connects to a spacious outdoor terrace, 24-hour concierge service, a club lounge with a fireplace and bar, a wine room, a private dining room and catering kitchen, The Den, a communal lounge space, a fitness studio full-equipped with top-of-the-line equipment, a bike for each resident to access nearby trails and a rooftop terrace space.









KILOGRAPH